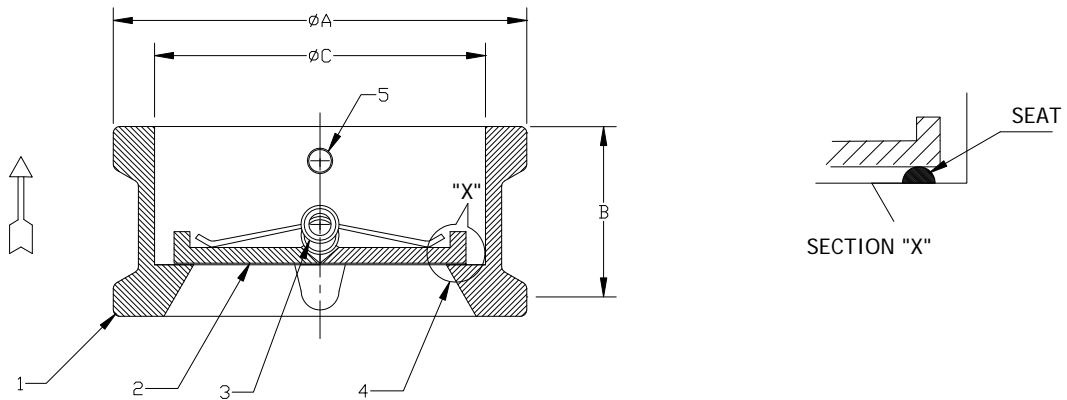


AMCO INDUSTRIAL VALVES

DUAL PLATE CHECK VALVES - PN 16

DATE : 17.5.07

REF: DRG.NO. DPCV-220



ANSI INSTALLATION DIMENSIONS

SL.NO	DESCRIPTION	MATERIAL
1	BODY	CAST IRON-IS:210 GR. FG 260
2	PLATES	CI/SGI/WCB/CF8/CF8M
3	SPRING	SS304/316
4	SEAT	EPDM /VITON
5	HINGE & STOP PINS	STAINLESS STEEL - AISI 410
6	PLUGS	FORGED STEEL ASTM A 105

VALVE SIZE	ANSI SERIES	END FACING	A	B	C	STUD SELECTION Ø X PCD X N
50	125	PLAIN	101	54	52	16 x 140 x 4
65	125	PLAIN	124	54	63	16 x 140 x 4
80	125	PLAIN	131	57	80	16 x 159 x 4
100	125	PLAIN	175	64	102	16 x 159 x 4
125	125	PLAIN	197	70	127	16 x 203 x 4
150	125	PLAIN	222	76	154	16 x 203 x 4
200	125	PLAIN	279	95	202	16 x 203 x 4
250	125	PLAIN	340	108	254	22 x 279 x12
300	125	PLAIN	410	143	303	22 x 279 x12
350	125	PLAIN	451	184	318	25 x 324 x12
400	125	PLAIN	514	191	381	25 x 337 x16
450	125	PLAIN	549	203	429	29 x 362 x16
500	125	PLAIN	606	213	476	29 x 381 x20

DUAL PLATE CHECK VALVE

(A TRUELY SILENT CHECK VALVE)

Compact, Light and Rugged design.
 Low Pressure Drop & Lower Energy Loss.
 Flexibility in installation - Horizontal & Vertical.
 Valve closure at Zero Velocity. Hence,
 'No Valve-Induced Water Hammer'.
 Silent 'Non-Slam' design. No Thuds.
 Long Life and Trouble Free Operation.
 An Economic Solution Right Through.

NOTE:- All Dimensions are in mm.

PRESSURE TEST - HYDRAULIC

SHELL	24Kg / cm ²
SEAT	16 Kg / cm ²

CUSTOMER : _____

ORDER NO : _____

JOB/PROJECT : _____

MANUFACTURED BY : AMCO INDUSTRIAL VALVES, CHENNAI - 600 013.

Due to continous development programme, the design and data given in this leaflet are subject to change without notice.

REV

FOR RECORD

FOR APPROVAL