

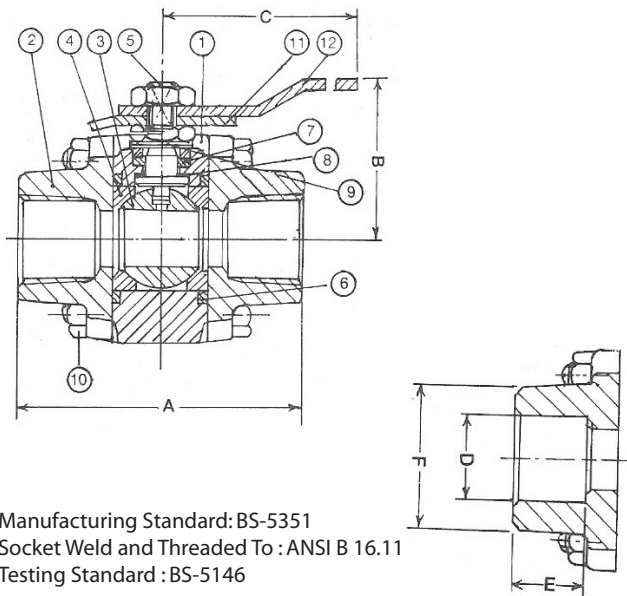
AMCO INDUSTRIAL VALVES



BALL VALVE - 'ECONOMISER' SERIES - SCREWED / SOCKET WELD

DATE: 13 - 06 - 07

REF: DRG. NO. 1006



No	Part Name	Material
1	Body	ASTM A 105
2	End Connector	
3	Ball	SS 410 / SS 304 / SS 316
4	Seat	PTFE / Reinforced
5	Stem	SS 304 / 316
6	Body Seal	PTFE / Reinforced
7	Gland Packing	
8	Stem Seal	
9	Gland	SS 304 / 316
10	Fastener	ASTM A193 - B7 / A 194 - 2 H
11	Stopper	Steel - CAD, Plated /
12	Hand Lever	Steel - CAD, Plated, Sleeved

Manufacturing Standard: BS-5351
 Socket Weld and Threaded To : ANSI B 16.11
 Testing Standard : BS-5146

SIZE	15	20	25	40	50
A	66.6	72.6	95.2	116	128.0
B	45.0	48.0	59.0	75.0	80.0
C	114.0	114.0	146.0	178.0	178.0
D	21.72 / 21.97	27.3 / 27.05	34.03 / 33.78	48.9 / 48.64	61.11 / 61.36
E	9.7	12.7	12.7	12.7	15.90
F	27.0	32.5	40.0	55.0	68.0
Wgt. Kg.	.680	.840	1.500	2.850	4.050
Qty.					
Tag No.					
Code	ASTM				
Material	A 105				
Specification :	ASTM				
* Test Pressure (Bar)					
Shell (Hydrostatic)	104				
Seat (Hydrostatic)	69				
Seat (Air)	5.5				
*Steam Ratings					
Saturated Steam Pressure (Bar)	31.0	29.0	27.5	22.0	20.5
Corresponding temp. °C	237	235	231	220	218

(All Dimensions in mm)

Customer _____
 Order No: _____
 Job / Project _____

Manufactured By : **AMCO INDUSTRIAL VALVES**, ROYAPURAM, CHENNAI - 600 013, INDIA.

Due to continuous development programme, the design and data given in this leaflet are subject to change without prior notice.

REV

For Record

For Approval

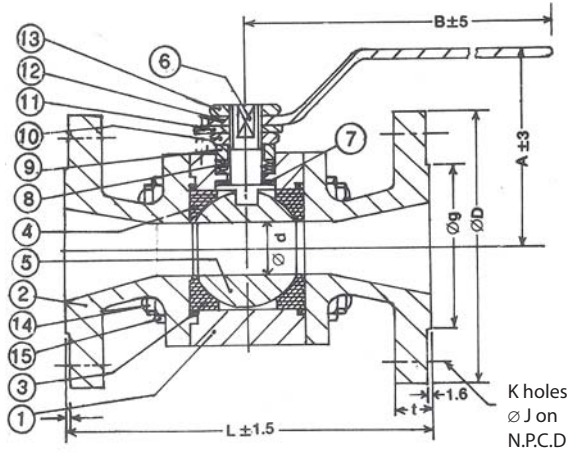
AMCO INDUSTRIAL VALVES



BALL VALVE - 3 pc Design Regular Port - ANSI Class - 150

DATE: 13 - 06 - 07

REF: DRG. NO. 1006



No	Nomenclature	Material							
		ASTM A	ASTM A	ASTM A	ASTM A	ASTM A	Alloy	HAST	HAST
1	Body	ASTM A	ASTM A	ASTM A	ASTM A	ASTM A	Alloy	HAST	HAST
2	End Body Connector	216 WCB	351 CF8	351 CF8M	351 CF3	351 CF3M	20	B	C
3	Body Seal	PTFE							
4	Ball Seat	PTFE - Virgin / Reinforced							
5	Ball	CF 8	CF 8	CF 8M	CF 3	CF 3M	Alloy 20	HAST B	HAST C
6	Stem	AISI 304	AISI 304	AISI 316	AISI 304L	AISI 316L	Alloy 20	HAST B	HAST C
7	Stem Seal	PTFE - Virgin / Reinforced							
8	Gland Packing	PTFE							
9	Gland	AISI 304	AISI 304	AISI 316	AISI 304L	AISI 316L	Alloy 20	HAST B	HAST C
10	Gland Nut	ASTM A 194 GR 2H / SS 304							
11	Stopper / Adopter	Steel CAD. Plated / EPOXY Powder Coated - Rust Proofed							
12	Lever	Steel EPOXY Powder Coated - Rust Proofed							
13	Lever Nut	ASTM A 194 GR 2H / SS 304							
14	Body Studs	ASTM A 193 GR B7 / SS 304							
15	Body Nuts	ASTM A 194 GR 2H / SS 304							

Manufacturing Standard : BS-5351
 Testing Standard : BS-5146
 Face to Face : ANSI B 16.10
 End Connection : Flanged to ANSI B16.5 RF

a) For sizes 150 and above / optional gear operated

SIZE	15	20	25	40	50	65	80	100	125	150	200	250
A	80	90	100	120	130	140	150	180	200	225	270	300
B	162	162	190	225	280	280	350	350	400	475	525	700
L	108	117	127	165	178	190	203	229	254	267	292	300
ø D	89	98	108	127	152	178	191	229	254	279	343	406
t	11.1	11.1	11.1	14.5	16	17.5	19.5	24	24	25.4	28.6	30.2
ø g	35	43	51	73	92	105	127	157	186	216	270	324
N	60.5	70	79.5	98.5	120.5	140	152.5	190.5	216	241	298.5	362
K	4	4	4	4	4	4	4	8	8	8	8	12
ø J	16	16	16	16	19	19	19	19	22	22	22	25
ø d (Min)	10	13	19	32	38	50	63	76	98	127	152	202
Wgt. Kg												
Qty.												
Tag No.												

Code WCB

Material ASTM A 216

Specification WCB

Test Pressure (BAR)

Shell (Hydrostatic) 30

Seat (Hydrostatic) 21

Seat (Air) 5.5

(All Dimensions in mm)

Customer _____

Order No: _____

Job / Project _____

Manufactured By : **AMCO INDUSTRIAL VALVES**, ROYAPURAM, CHENNAI - 600 013, INDIA.

Due to continuous development programme, the design and data given in this leaflet are subject to change without prior notice.

REV

For Record

For Approval

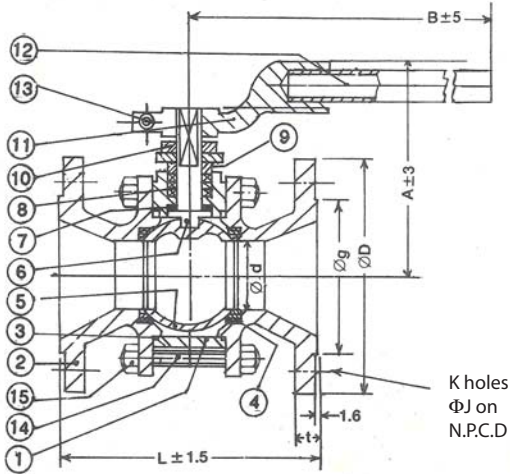
AMCO INDUSTRIAL VALVES



BALL VALVE - 3 pc Design Regular Port - ANSI Class - 300

DATE: 13 - 06 - 07

REF: DRG. NO. 1009



No	Nomenclature	Material							
		ASTM A	ASTM A	ASTM A	ASTM A	ASTM A	Alloy	HAST	HAST
1	Body	ASTM A	ASTM A	ASTM A	ASTM A	ASTM A	Alloy	HAST	HAST
2	End Body Connector	216 WCB	351 CF8	351 CF8M	351 CF3	351 CF3M	20	B	C
3	Body Seal	PTFE							
4	Ball Seat	PTFE - Virgin / Reinforced							
5	Ball	CF 8	CF 8	CF 8M	CF 3	CF 3M	Alloy 20	HAST B	HAST C
6	Stem	AISI 304	AISI 304	AISI 316	AISI 304L	AISI 316L	Alloy 20	HAST B	HAST C
7	Stem Seal	PTFE - Virgin / Reinforced							
8	Gland Packing	PTFE							
9	Gland	AISI 304	AISI 304	AISI 316	AISI 304L	AISI 316L	Alloy 20	HAST B	HAST C
10	Gland Nut	ASTM A 194 GR 2H / SS 304							
11	Stopper / Adaptor	Steel CAD. Plated / EPOXY Powder Coated - Rust Proofed							
12	Lever	Steel EPOXY Powder Coated - Rust Proofed							
13	Lever Nut	ASTM A 194 GR 2H / SS 304							
14	Body Studs	ASTM A 193 GR B7 / SS 304							
15	Body Nuts	ASTM A 194 GR 2H / SS 304							

Manufacturing Standard : BS-5351
 Testing Standard : BS-5146
 Face to Face : ANSI B 16.10
 End Connection : Flanged to ANSI B16.5 RF

a) For sizes 150 and above / optional gear operated

SIZE	15	20	25	40	50	65	80	100	125	150	200	250
A	80	90	100	120	130	140	150	180		225	270	300
B	162	162	190	225	280	280	350	350		475	525	700
L	140	152	165	191	216	241	283	305		403	419	457
ΦD	95	117	124	156	165	191	210	254		318	381	445
t	14.3	16.0	17.5	21.0	22.5	25.5	29.0	32.0		36.6	41.3	47.6
Φg	35	43	51	73	92	105	127	157		216	270	324
N	67.0	82.5	89.0	114.5	127.0	149.0	168.5	200.0		270	330.0	387.0
K	4	4	4	4	8	8	8	8		12	12	16
ΦJ	16	19	19	22	19	22	22	22		22	25	29
Φd (Min)	13	19	25	38	50	63	76	101		148	198	248
Wgt. Kg												
Qty.												
Tag No.												

Code	WCB
Material	ASTM A 216
Specification	WCB
Test Pressure (BAR)	
Shell (Hydrostatic)	77
Seat (Hydrostatic)	52
Seat (Air)	5.5
(All Dimensions in mm)	

Customer _____
 Order No: _____
 Job / Project _____

Manufactured By : **AMCO INDUSTRIAL VALVES**, ROYAPURAM, CHENNAI - 600 013, INDIA.
 Due to continuous development programme, the design and data given in this leaflet are subject to change without prior notice.

REV

For Record

For Approval

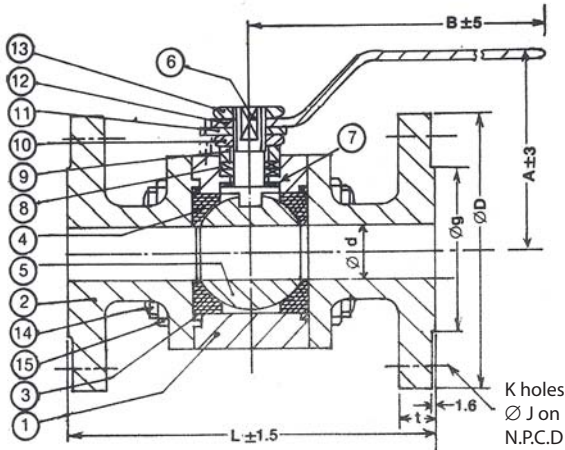
AMCO INDUSTRIAL VALVES



BALL VALVE - 3 pc Design Full Port - ANSI Class - 150

DATE: 13 - 06 - 07

REF: DRG. NO. 1007



No	Nomenclature	Material							
		ASTM A	ASTM A	ASTM A	ASTM A	ASTM A	Alloy	HAST	HAST
1	Body	ASTM A	ASTM A	ASTM A	ASTM A	ASTM A	Alloy	HAST	HAST
2	End Body Connector	216 WCB	351 CF8	351 CF8M	351 CF3	351 CF3M	20	B	C
3	Body Seal	PTFE							
4	Ball Seat	PTFE - Virgin / Reinforced							
5	Ball	CF 8	CF 8	CF 8M	CF 3	CF 3M	Alloy 20	HAST B	HAST C
6	Stem	AISI 304	AISI 304	AISI 316	AISI 304L	AISI 316L	Alloy 20	HAST B	HAST C
7	Stem Seal	PTFE - Virgin / Reinforced							
8	Gland Packing	PTFE							
9	Gland	AISI 304	AISI 304	AISI 316	AISI 304L	AISI 316L	Alloy 20	HAST B	HAST C
10	Gland Nut	ASTM A 194 GR 2H / SS 304							
11	Stopper / Adopter	Steel CAD, Plated / EPOXY Powder Coated - Rust Proofed							
12	Lever	Steel EPOXY Powder Coated - Rust Proofed							
13	Lever Nut	ASTM A 194 GR 2H / SS 304							
14	Body Studs	ASTM A 193 GR B7 / SS 304							
15	Body Nuts	ASTM A 194 GR 2H / SS 304							

Manufacturing Standard : BS-5351
 Testing Standard : BS-5146
 Face to Face : ANSI B 16.10
 End Connection : Flanged to ANSI B16.5 RF

a) For sizes 150 and above / optional gear operated

SIZE	15	20	25	40	50	65	80	100	125	150	200	250
A	80	90	100	120	130	140	150	180		225	270	300
B	162	162	190	225	280	280	350	350		475	525	700
L	108	117	127	165	178	190	203	229		267	292	300
φ D	89	98	108	127	152	178	191	229		279	343	406
t	11.1	11.1	11.1	14.5	16.0	17.5	16.5	24.0		25.4	28.6	30.2
φ g	35	43	51	73	92	105	127	157		216	270	324
N	60.5	70.0	79.5	98.5	120.5	140.0	152.5	190.5		241.0	298.5	326.0
K	4	4	4	4	4	4	4	8		8	8	12
φ J	16	16	16	16	19	19	19	19		22	22	25
φ d (Min)	13	19	25	38	50	63	76	101		148	198	248
Wgt. Kg	2.3	2.6	4.3	6.7	11.2	15.8	19.5	28.0				
Qty.												
Tag No.												

Code WCB

Material ASTM A 216

Specification WCB

Test Pressure (BAR)

Shell (Hydrostatic) 30

Seat (Hydrostatic) 21

Seat (Air) 5.5

(All Dimensions in mm)

Customer _____

Order No: _____

Job / Project _____

Manufactured By : **AMCO INDUSTRIAL VALVES**, ROYAPURAM, CHENNAI - 600 013, INDIA.

Due to continuous development programme, the design and data given in this leaflet are subject to change without prior notice.

REV

For Record

For Approval

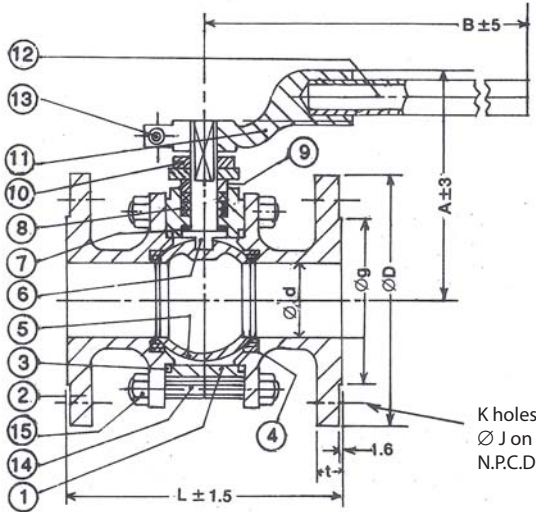
AMCO INDUSTRIAL VALVES



BALL VALVE - 3 pc Design Full Port - ANSI Class - 300

DATE: 13 - 06 - 07

REF: DRG. NO. 1010



Manufacturing Standard : BS-5351
 Testing Standard : BS-5146
 Face to Face : ANSI B 16.10
 End Connection : Flanged to ANSI B16.5 RF

No	Nomenclature	Material							
		ASTM A 216 WCB	ASTM A 351 CF8	ASTM A 351 CF8M	ASTM A 351 CF3	ASTM A 351 CF3M	Alloy 20	HAST B	HAST C
1	Body	ASTM A 216 WCB	ASTM A 351 CF8	ASTM A 351 CF8M	ASTM A 351 CF3	ASTM A 351 CF3M	Alloy 20	HAST B	HAST C
2	End Body Connector	216 WCB	351 CF8	351 CF8M	351 CF3	351 CF3M	20	B	C
3	Body Seal	PTFE							
4	Ball Seat	PTFE - Virgin / Reinforced							
5	Ball	CF 8	CF 8	CF 8M	CF 3	CF 3M	Alloy 20	HAST B	HAST C
6	Stem	AISI 304	AISI 304	AISI 316	AISI 304L	AISI 316L	Alloy 20	HAST B	HAST C
7	Stem Seal	PTFE - Virgin / Reinforced							
8	Gland Packing	PTFE							
9	Gland	AISI 304	AISI 304	AISI 316	AISI 304L	AISI 316L	Alloy 20	HAST B	HAST C
10	Gland Nut	ASTM A 194 GR 2H / SS 304							
11	Stopper / Adaptor	Steel CAD. Plated / EPOXY Powder Coated - Rust Proofed							
12	Lever	Steel EPOXY Powder Coated - Rust Proofed							
13	Lever Nut	ASTM A 194 GR 2H / SS 304							
14	Body Studs	ASTM A 193 GR B7 / SS 304							
15	Body Nuts	ASTM A 194 GR 2H / SS 304							

a) For sizes 150 and above / optional gear operated

SIZE	15	20	25	40	50	65	80	100	125	150	200	250
A	80	90	100	120	130	140	150	180		225	270	300
B	162	162	190	225	280	280	350	350		475	525	700
L	140	152	165	191	216	241	283	305		403	419	457
φ D	95	117	124	156	165	191	210	254		318	381	445
t	14.3	16.0	17.5	21.0	22.5	25.5	29.0	32.0		36.6	41.3	47.6
φ g	35	43	51	73	92	105	127	157		216	270	324
N	67.0	82.5	89.0	114.5	127.0	149.0	168.5	200.0		270.0	330.0	387.0
K	4	4	4	4	8	8	8	8		12	12	16
φ J	16	19	19	22	19	22	22	22		22	25	29
φ d (Min)	10	13	19	32	38	50	63	76		127	152	202
Wgt. Kg												
Qty.												
Tag No.												

Code	WCB
Material	ASTM A 216
Specification	WCB
Test Pressure (BAR)	
Shell (Hydrostatic)	77
Seat (Hydrostatic)	52
Seat (Air)	5.5

(All Dimensions in mm)

Customer _____
 Order No: _____
 Job / Project _____

Manufactured By : **AMCO INDUSTRIAL VALVES**, ROYAPURAM, CHENNAI - 600 013, INDIA.

Due to continuous development programme, the design and data given in this leaflet are subject to change without prior notice.

REV

For Record

For Approval