

AMCO INDUSTRIAL VALVES

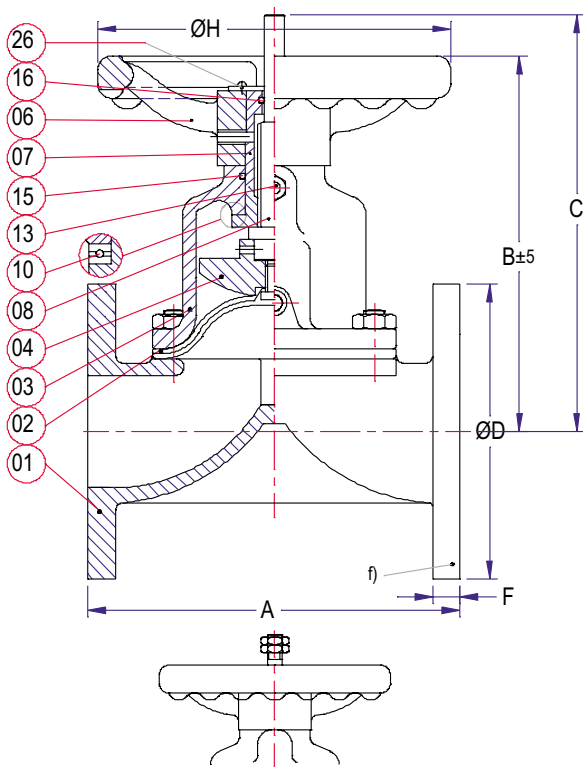


Diaphragm Valve - Unlined, Model 'WT - UL'

Date : 24 - 06 - 2007

DRG. No : DPV - WT - UL

Unlined



PT.NO.	Part Name	Material
01	Body	# CI/ DI/ S G IRON/ WCB/ CF8/ CF8M
02	Diaphragm ^{a)}	
03	Bonnet	CI/ WCB/ CF8/ CF8M
04	Compressor	CI/ WCB/ CF8/ CF8M
06	Handwheel	CI
07	Stem Bushing	S.G.IRON
08	Stem	410
10	Thrusr Bearing ^{b)}	Steel
13	Lubrication Fitting ^{c)}	Brass
15	'O' Ring seal (Bushing) ^{d)}	Buna - N
16	'O' Ring seal (Stem) ^{d)}	Buna - N
26	Name Plate ^{e)}	304

- a) Diaphragm Hardness : _____ Shore 'A'
 - b) For Sizes 80 and Higher
 - c) Applicable for sizes 125 & Higher, Not Applicable for Sealed Bonnet
 - d) For Sealed Bonnet only (Sealed Bonnet available on request)
 - e) For sizes 125 & Higher on Flanges
 - f) Flange Drilling
- Note.
- 1) Valve Length = EN 558-1 Series 7 (BS 5156) & EN 558-1 Series 1 (DIN 3202 Series F1)
 - 2) Weight (Wt) Indicated is approximate.
 - 3) Valves with Body Material in Carbon Steel, Stainless Steel have flanges with raised face.

Design Standard: EN - 13397 (2001) (BS 5156)

Testing Standard: prEN - 12266- 3(1995)/BS6755 - I

All Dimensions are in mm.

Size	15	20	25	32	40	50	65	80	100	125	150	200	250	300	350	
A	Series 7	108	117	127	146	159	190	216	254	305	356	406	521	635	749	749
	Series 1	130	150	160	180	200	230	290	310	350	400	480	600	730	850	980
B	89	97	111	112	150	157	177	230	252	302	364	475	580	684	825	
C	90	102	118	131	164	179	206	260	296	362	431	584	699	825	1025	
ØD	95	105	115	133	150	165	185	200	229	254	285	343	406	483	533	
ØH	70		100		140		180	225		310	368	471	587	690		
F	CI	12.0	12.0	12.0	12.0	15.0	17.5	18.0	19.0	23.8	23.8	25.4	22.0	24.0	24.0	26.0
	Steel	9.7	10.5	11.2	13.0	14.2	15.8	17.5	19.0	20.0	22.0	22.0	20.0	22.0	22.0	22.0
Wt.	Series 7	2.5	2.6	3.5	4.5	7	10	15	22	37	62	91	163	240	418	480
kg	Series 1	2.8	3.2	4.2	5.5	8	15	19	26	42	68	106	185	275	480	550
Opt.PR. bar	16.00						10.50			10.00		7.00	6.00			
Qty																
Test Pressure	bar															
HYD	Shell	24.00						15.75			15.00	10.50	9.00			
	Seat	17.60						11.5			11.00	7.70	6.60			
Air Seat	5.00															
Test Pressure	bar For PTFE Diaphragm															
Opt.PR. bar	10.00						5.00									
HYD	Shell	15.00						7.50								
	Seat	10.00						5.00								
Tag No																
Code	CI		DI	WCB	CF8	CF8M	S.G.Iron				410	304				
Material Specn	EN1561	IS: 210	A 395	A 216	A 351	A 351	EN 1563 #	EN 1563	IS: 1865	A 276	A 240					
	EN -JL1040	FG 260	DI	WCB	CF 8	CF 8M	EN -JS1024	EN -JS1050	500/7	410	304					

Customer

Order No.

Job / Project

Manufactured By : **AMCO INDUSTRIAL VALVES, ROYAPURAM, CHENNAI - 600 013, INDIA.**

Due to continuous development programme, the design and data given in this leaflet are subject to change without prior notice.

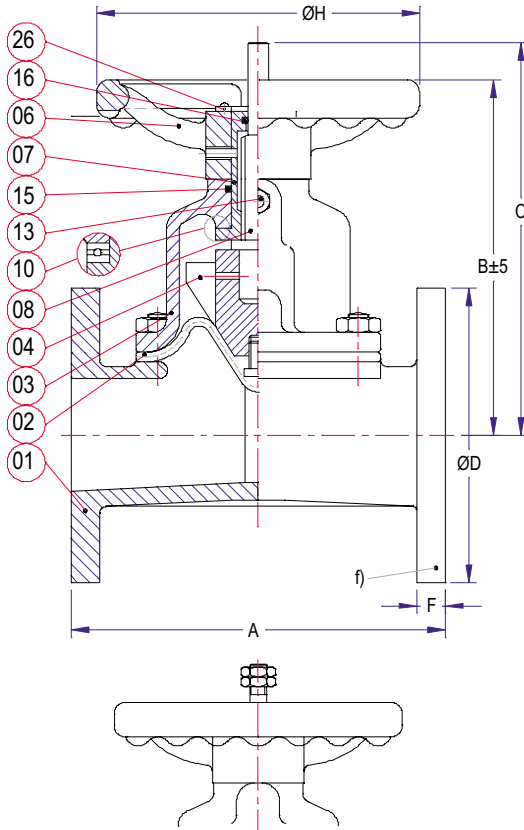
REV

For Record

For Approval



Unlined



PT.NO.	Part Name	Material
01	Body #	CI /DI /S G IRON /WCB /CF8 /CF8M
02	Diaphragm ^{a)}	
03	Bonnet	CI /WCB /CF8 /CF8M
04	Compressor	CI /WCB /CF8 /CF8M
06	Handwheel	CI
07	Stem Bush	S.G.IRON
08	Stem	410
10	Thrust Bearing ^{b)}	Steel
13	Lubrication Fitting ^{c)}	Brass
15	'O' Ring seal (Bushing) ^{d)}	Buna - N
16	'O' Ring seal (Stem) ^{d)}	Buna - N
26	Name Plate ^{e)}	304

- a) Diaphragm Hardness : _____ Shore 'A'
- b) For Sizes 80 and Higher
- c) Applicable for sizes 125 & Higher, Not Applicable for Sealed Bonnet
- d) For Sealed Bonnet only (Sealed Bonnet available on request)
- e) For sizes 125 & Higher on Flanges
- f) Flange Drilling

Note.

- 1) Valve Length = EN 558-1 Series 7 (BS 5156) & EN 558-1 Series 1 (DIN 3202 Series F1)
- 2) Weight (Wt) indicated is approximate.
- 3) Valves with body material in Carbon Steel, Stainless Steel have Flanges with raised face.

Design Standard: EN - 13397 (2001) (BS 5156)
 Testing Standard: prEN - 12266- 3(1995) / BS6755 - I

All Dimensions are in mm.

Size	15	20	25	32	40	50	65	80	100	125	150	200	250	300		
A	Series 7	108	117	127	146	159	190	216	254	305	356	406	521	635	749	
	Series 1	130	150	160	180	200	230	290	310	350	400	480	600	730	850	
B	87	87	109	109	109	143	174	202	240	268	429	416	540	635		
C	92	92	120	120	120	169	207	240	280	345	520	516	665	795		
Ø D	95	105	115	133	150	165	185	200	229	254	285	343	406	483		
Ø H	70		100			140	180	225		310	368		587			
F	12.0	12.0	12.0	12.0	15.0	17.5	18.0	19.0	23.8	23.8	20.0	22.0	24.0	24.0		
Wt. kg	Series 7	2.4	2.8	4.2	4.5	5.5	10	15	25	32	55	85	144	188	330	
	Series 1	2.5	3.0	4.5	5.5	6.0	10.5	15.5	26	33	57	87	146	192	335	
Opt. PR. bar	10.50									7.00		5.25				
Qty																
Test Pressure	bar															
HYD	Shell	15.75							10.50		8.00					
	Seat	10.50							7.00		5.25					
Air Seat	5.00															
Tag No																
Code	CI			DI	WCB	CF8	CF8M	S.G.IRON				410	304			
Material Specn	EN1561	IS: 210	A 395	A 216	A 351	A 351	EN 1563 #	EN 1563	IS: 1865	A 276	A 240					
	EN - JL 1040	FG 260	DI	WCB	CF8	CF 8M	EN JS 1024	EN JS 1050	500 / 7	410	304					

Customer _____
 Order No. _____
 Job / Project _____

Manufactured By : **AMCO INDUSTRIAL VALVES, ROYAPURAM, CHENNAI - 600 013, INDIA.**

Due to continuous development programme, the design and data given in this leaflet are subject to change without prior notice.

REV



For Record



For Approval



AMCO INDUSTRIAL VALVES

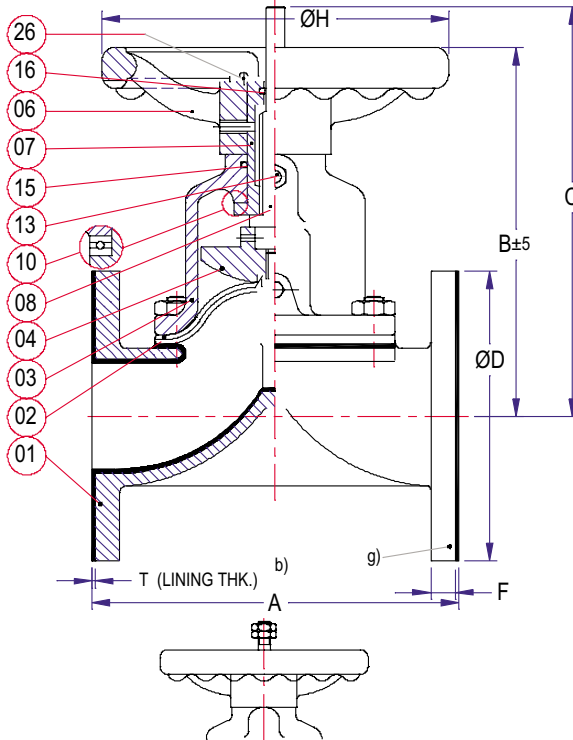


Diaphragm Valve - Rubber Lined, Model 'WT - RL'

DATE : 24 - 06 - 2007

DRG. No : DPV WT - RL

Rubber Lined



PT.NO.	Part Name	Material
01	Body #	CI/DI/S G IRON/WCB/CF8/CF8M
02	Diaphragm a)	
03	Bonnet	CI/WCB/CF8/CF8M
04	Compressor	CI/WCB/CF8/CF8M
06	Handwheel	CI
07	Stem Bushing	S.G.IRON
08	Stem	410
10	Thrusr Bearing c)	Steel
13	Lubrication Fitting d)	Brass
15	'O' Ring seal (Bushing) e)	Buna - N
16	'O' Ring seal (Stem) e)	Buna - N
26	Name Plate f)	304

- a) Diaphragm Hardness : _____ Shore 'A'
 - b) Lining Hardness : _____ Shore 'A'
 - c) For Sizes 80 and Higher
 - d) Applicable for sizes 125 & Higher, Not Applicable for Sealed Bonnet
 - e) For Sealed Bonnet only (Sealed Bonnet available on request)
 - f) For sizes 125 & Higher on Flanges
 - g) Flange Drilling
- Note.
- 1) Valve Length = EN 558-1 Series 7 (BS 5156) & EN 558-1 Series 1 (DIN 3202 Series F1)
 - 2) Other dimensions are only indicative is approximate.

Indicating with Travel Stop (Optional)

Design Standard: EN - 13397 (2001) (BS 5156)
Testing Standard: prEN - 12266-3(1995)/BS6755 - I

All Dimensions are in mm.

Size	15	20	25	32	40	50	65	80	100	125	150	200	250	300	350	
A	Series 7	114	123	133	152	165	196	222	260	313	364	414	529	645	759	759
	Series 1	130	150	160	180	200	230	290	310	350	400	480	600	730	850	980
B	92	100	114	115	153	160	180	233	256	306	368	479	585	689	830	
C	90	102	118	121	164	179	206	260	269	362	431	584	699	825	1025	
T	3							4					5			
øD	95	105	115	133	150	165	185	200	229	254	285	343	406	483	533	
øH	70			100			140		180	225		310	368	471	587	690
F	CI	12.0	12.0	12.0	12.0	15.0	17.5	18.0	19.0	23.8	23.8	25.4	22.0	24.0	24.0	26.0
	Steel	9.7	10.5	11.2	13.0	14.2	15.8	17.5	19.0	20.0	22.0	22.0	20.0	22.0	22.0	22.0
Wt. kg	Series 7	2.5	2.6	3.5	4.5	7	10	15	22	37	62	91	163	240	418	480
	Series 1	2.8	3.2	4.2	5.5	8	15	19	26	42	68	106	185	275	480	550
Opt.PR. bar	16.00						10.50			10.00		7.00	6.00			
Qty																
Test Pressure bar																
HYD	Shell	24.00						15.75			15.00	10.50	9.00			
	Seat	17.60						11.50			11.00	7.70	6.60			
Air Seat		5.00														
Test Pressure bar For PTFE Diaphragm																
Opt.PR. bar		10.00						5.00								
HYD	Shell	15.00						7.50								
	Seat	10.00						5.00								
Tag No																
Code	CI		DI	WCB	CF8	CF8M	S. G. Iron					410	304			
Material Specn	EN1561	IS: 210	A 395	A 216	A 351	A 351	EN 1563 #	EN 1563	IS: 1865	A 276	A 240					
	EN -JL1040	FG 260	DI	WCB	CF8	CF8M	EN -JS1024	EN -JS1050	500/7	410	304					

Customer _____
Order No. _____
Job / Project _____

Manufactured By : **AMCO INDUSTRIAL VALVES**, ROYAPURAM, CHENNAI - 600 013, INDIA.

Due to continuous development programme, the design and data given in this leaflet are subject to change without prior notice.

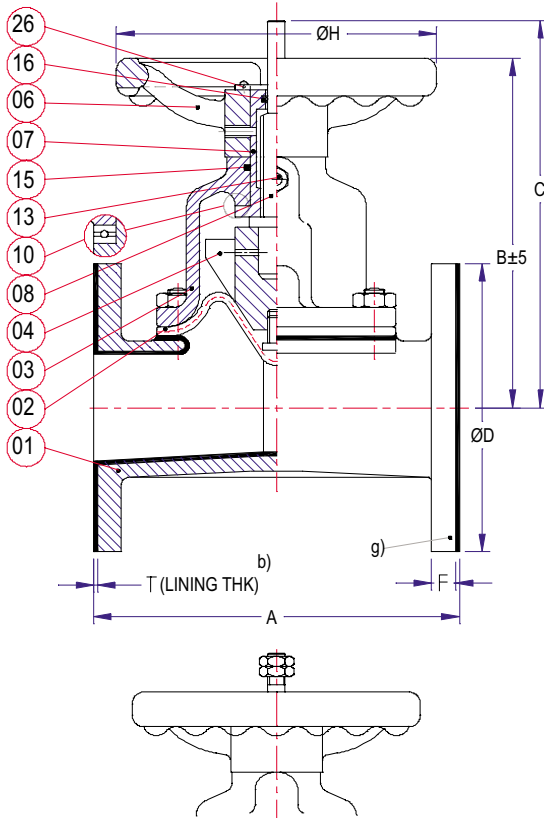
REV

For Record

For Approval



Rubber Lined



Indicating with Travel Stop (Optional)

PT.NO.	Part Name	Material
01	Body	# CI /DI /S G IRON /WCB /CF8 /CF8M
02	Diaphragm ^{a)}	
03	Bonnet	CI /WCB /CF8 /CF8M
04	Compressor	CI /WCB /CF8 /CF8M
06	Handwheel	CI
07	Stem Bush	S.G.IRON
08	Stem	410
10	Thrust Bearing ^{c)}	Steel
13	Lubrication Fitting ^{d)}	Brass
15	'O' Ring seal (Bushing) ^{e)}	Buna - N
16	'O' Ring seal (Stem) ^{e)}	Buna - N
26	Name Plate ^{f)}	304

- a) Diaphragm Hardness : _____ Shore 'A'
- b) Lining Hardness : _____ Shore 'A'
- c) For Sizes 80 and Higher
- d) Applicable for sizes 125 & Higher, Not Applicable for Sealed Bonnet
- e) For Sealed Bonnet only (Sealed Bonnet available on request)
- f) For sizes 125 & Higher on Flanges
- g) Flange Drilling

Note.

- 1) Valve Length = EN 558-1 Series 7 (BS 5156) & EN 558-1 Series 1 (DIN 3202 Series F1).
- 2) Weight (Wt) indicated is approximate.

Design Standard: EN - 13397 (2001) (BS 5156)
 Testing Standard: prEN - 12266- 3(1995) / BS6755 - I

All Dimensions are in mm.

Size	15	20	25	32	40	50	65	80	100	125	150	200	250	300		
A	Series 7	114	123	133	152	165	196	222	260	313	364	414	529	645	759	
	Series 1	130	150	160	180	200	230	290	310	350	400	480	600	730	850	
B	90	90	112	112	112	146	177	205	244	272	433	420	545	640		
C	95	95	121	121	121	171	210	244	288	350	524	520	670	800		
T	3					4					5					
øD	95	105	115	140	150	165	185	200	229	254	285	343	406	483		
øH	70		100			140	180	225		310	368		587			
F	12.0	12.0	12.0	12.0	15.0	17.5	18.0	19.0	23.8	23.8	20.0	22.0	24.0	24.0		
Wt. kg	Series 7	2.4	2.8	4.2	4.5	5.5	10	15	25	32	55	85	144	188	330	
	Series 1	2.5	3.0	4.5	5.5	6.0	10.5	15.5	26	33	57	87	146	192	335	
Opt. PR. bar	10.50										7.00		5.25			
Qty																
Test Pressure		bar														
HYD	Shell						15.75					10.50		8.00		
	Seat						10.50					7.00		5.25		
Air Seat		5.00														
Tag No																
Code		CI		DI	WCB	CF8	CF8M	S.G.Iron					410	304		
Material Specn	EN1561	IS: 210	A 395	A 216	A 351	A 351	EN 1563	EN 1563	IS : 1865	A 276	A 240					
	EN - JL 1040	FG 260	DI	WCB	CF8	CF 8M	EN JS 1050	EN JS 1050	500 / 7	410	304					

Customer _____
 Order No. _____
 Job / Project _____

Manufactured By : **AMCO INDUSTRIAL VALVES, ROYAPURAM, CHENNAI - 600 013, INDIA.**

Due to continuous development programme, the design and data given in this leaflet are subject to change without prior notice.

REV



For Record

For Approval